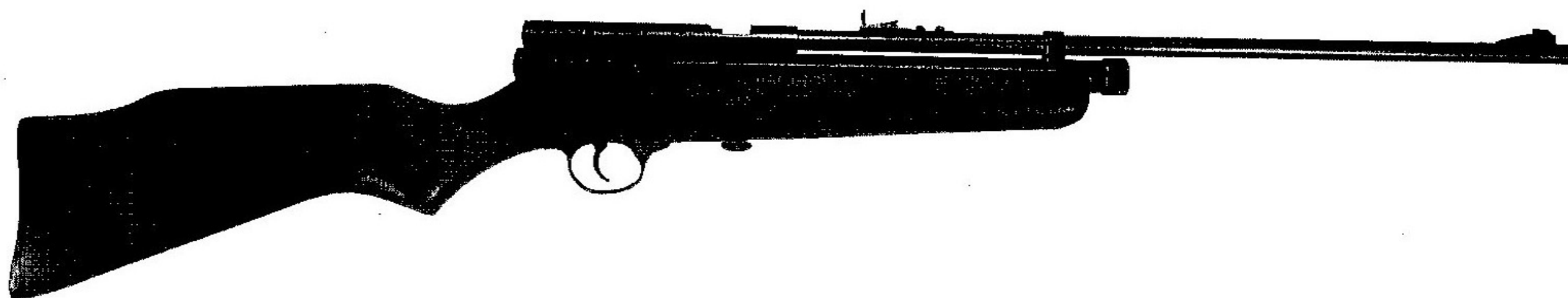


**INSTRUCTION MANUAL FOR**  
**SMK XS78CO2**  
**.22(5.5mm) CALIBRE**



**DOUBLE CHARGED CO2 XS78CO2**

**READ ALL INSTRUCTIONS AND WARNINGS**  
**CAREFULLY IN THIS MANUAL BEFORE USING THIS**  
**CO2 AIR RIFLE**

**IMPORTANT WARNING:** THIS IS NOT A TOY. MISUSE OR CARELESS USE MAY CAUSE OR RESULT IN SERIOUS INJURY OR DEATH. MAY BE DANGEROUS UP TO 350 YARDS (320 METRES). EYE PROTECTION DESIGNED SPECIFICALLY FOR AIR RIFLES MUST BE WORN BY ALL SHOOTERS AND ALL PEOPLE WITHIN THE VICINITY.

# DOUBLE CHARGED XS78CO2

**IMPORTANT: DO NOT ATTEMPT TO DIS-ASSEMBLE**  
**THE MECHANISM OF THIS GUN IS COMPLICATED AND INCLUDES**  
**SAFETY MECHANISMS AND COMPRESSED GAS AND CO2 PRESSURED**  
**CHAMBERS - SERIOUS INJURY OR DEATH MAY OCCUR IF**  
**DISASSEMBLY IS ATTEMPTED BY AN UNSKILLED & INEXPERIENCED**  
**PERSON**

## **CONTENTS:**

- **PART 1: SAFETY FIRST**
- **PART 2: UNDERSTANDING CO2**
- **PART 3: OPERATION AND MAINTENANCE**
- **PART 4: SPECIFICATION**
- **PART 5: EXPLODED VIEW AND PARTS LIST**
- **SERVICE/WARRANTY**

### **PART 1. SAFETY FIRST:**

- **ALWAYS TREAT THE GUN AS IF IT IS LOADED**
  - **ALWAYS POINT IN A SAFE DIRECTION**
  - **ALWAYS CHECK TO SEE IF THE GUN IS EMPTY BEFORE HANDLING**
  - **ALWAYS WEAR PROTECTION GOGGLES – BOTH SHOOTERS AND SPECTATORS.**
  - **ALWAYS KEEP THE SAFETY ENGAGED UNTIL YOU ARE READY TO SHOOT AND POINTING THE RIFLE IN A SAFE DIRECTION – KEEP YOUR FINGER AWAY FROM THE TRIGGER AREA UNTIL YOU ARE READY AND IT IS SAFE TO SHOOT**
  - **ALWAYS ENSURE YOU HAVE A CLEAR AND SAFE SHOOTING BACK GROUND**
  - **ALWAYS USE THE CORRECT AMMUNITION**
- 
- **NEVER POINT THE GUN AT ANYONE OR AT ANYTHING AT WHICH YOU DO NOT INTEND TO SHOOT**
  - **NEVER STORE YOUR GUN LOADED**
  - **NEVER STORE THE GUN WITH AMMUNITION**
  - **NEVER FIRE YOUR GUN AT HARD OBJECTS AS RICOCHETS CAN OCCUR**
  - **NEVER ALLOW OTHERS TO USE OR INSPECT YOUR GUN WITHOUT FIRST INSTRUCTING THEM THE FUNDAMENTALS OF SAFE USE – FOR SAFETY PROTECTION ALWAYS STRESS KEEPING THE MUZZLE POINTING IN A SAFE DIRECTION AT ALL TIMES.**
  - **NEVER ADJUST THE TRIGGER PRESSURE**
  - **NEVER RE-USE AMMUNITION**

**CAUTION : ALWAYS ENSURE YOU HAVE A SAFE BACKSTOP – PLACE THE BACKSTOP IN A LOCATION THAT WILL BE SAFE SHOULD THE BACKSTOP FAIL. *THINK* ABOUT WHAT YOU WILL HIT IF YOU MISS THE TARGET!**

## **PART 2. UNDERSTANDING CO2**

- CO2 CAPSULES ARE A SEALED SELF CONTAINED SINGLE CHARGE UNIT.
- THIS AIRGUN IS DESIGNED FOR USE IN TEMPERATURES BETWEEN 40°F AND 100°F (5°C - 38°C).
- BELOW 40°F (5° C) THE PROJECTILES WILL TRAVEL MUCH SLOWER THAN NORMAL. THE VELOCITY WILL INCREASE AS THE TEMPERATURS INCREASES
- TO REMOVE A PARTIALLY FILLED CO2 CAPSULE FROM THE GUN, PUT SAFETY (P/N3300) IN THE FIRE POSITION (F), POINT THE GUN IN A SAFE DIRECTION COCK AND FIRE UNTIL ALL OF THE CO2 HAS BEEN DISCHARGED. THE BEST WAY TO JUDGE IF THE SYSTEM IS COMPLETELY DISCHARGED IS TO CHECK IF YOUR ABLE TO REMOVE THE CAP EASILY BY HAND.
- IF YOU CANNOT TURN THE CAP (PN3400) BY HAND, THE SYSTEM IS STILL UNDER HIGH PRESSURE. CONTINUE TO DISCHARGE THE GUN UNTIL THIS IS EMPTY.
- **NEVER USE TOOLS ON THE TUBE CAP (PN3400) THIS SHOULD BE TIGHTEND OR REMOVED BY HAND ONLY.**
- A SMALL VENT HOLE IS LOCATED BETWEEN THE FOURTH AND THE FIFTH THREAD AT THE END OF THE TUBE. THIS RELEASES ANY REMAINING PRESSURE IN THE SYSTEM. STOP TURNING THE TUBE CAP ONCE YOU HEAR THE GAS ESCAPING. – WAIT FOR THE SYSTEM TO BECOME COMPLETELY DISCHARGED. THEN UNSCREW THE CAP COMPLETELY VERY SLOWLY BY HAND.

### CHARGING THE RIFLE :

- THIS CO2 RIFLE OPERATES WITH TWO CO2 CAPSULES SIMULTANEOUSLY.
- TO CHARGE, FIRST REMOVE THE TUBE CAP. (IF THIS IS DIFFICULT - MAKE SURE THE RIFLE IS NOT ALREADY CHARGED BY FIRING ONE SHOT IN A SAFE DIRECTION)
- AFTER REMOVING THE TUBE CAP, **COCK THE GUN** BY PULLING BACK ON THE BOLT (P/N1300), **ENGAGE THE SAFETY** (P/N3300) SO THAT THE ARROW POINTS TO "S" INDICATING IT IS ON SAFE, THEN INSERT TWO (2) 12 GRAM CO2 CAPSULES "**BACK TO BACK**" AS PER DIAGRAM BELOW.
- THEN TIGHTEN THE TUBE CAP FIRMLY BY HAND. THEN TURN BACK THE TUBE CAP BY ONE ¼ TURN. THIS WILL THEN RELEASE THE CO2 FROM THE CAPSULES INTO THE CHAMBER. THE OTHER CAPSULE WILL IN TURN BE RELEASED WHEN THE RIFLE IS FIRED.



CO<sub>2</sub> CARTRIDGES  
BACK TO BACK

**DO NOT ATTEMPT TO IN ANY WAY ARTIFICIALLY INCREASE/ DECREASE TEMPERATURES IN ORDER TO OBTAIN HIGHER OR LOWER POWERS.**

**WARNING:** CO2 CAPSULES MAY EXPLODE AT TEMPERATURES ABOVE 120°F. DO NOT MUTILATE OR INCINERATE THEM. DO NOT EXPOSE THEM TO HEAT OR STORE AT TEMPERATURES ABOVE 120°F.

**WARNING:** THE CO2 DISPOSABLE CAPSULE SHOULD ONLY BE REMOVED IF COMPLETELY EMPTY.

**WARNING:** KEEP HANDS AWAY FROM ESCAPING CO2 GAS. IT CAN CAUSE FROSTBITE/BURNS IF ALLOWED TO COME IN TO CONTACT WITH SKIN. FOLLOW THE MANUFACTURER'S INSTRUCTIONS FOR HANDLING AND STORAGE OF YOUR CHOSEN CO2 CAPSULE BRAND.

### **PART 3. OPERATION AND MAINTENANCE**

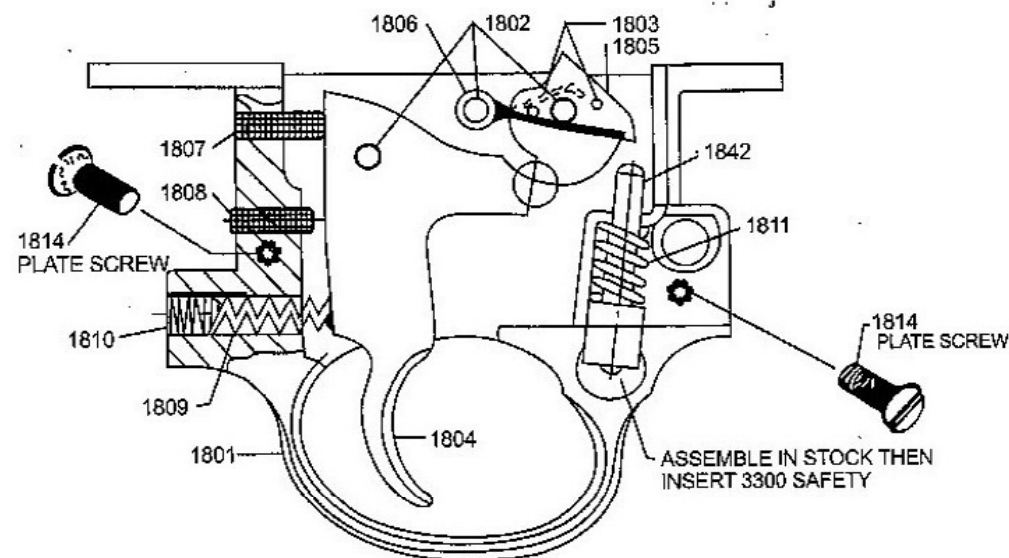
- TO FIRE THE RIFLE, FIRST PULL THE COCKING BOLT (P/N1300) UP AND BACK ALL THE WAY UNTILL YOU HEAR THE "CLICK" OF THE TRIGGER ENGAGING
- INSERT IN TO THE BREECH (P/N1200) A .177 (4.5mm) OR .22(5.5mm) PELLET, DEPENDING ON THE RIFLE' S CALIBRE.
- CHAMBER THE PELLET BY THEN PUSHING THE COCKING BOLT FORWARD AND DOWN TO LOCK THE BREECH.
- DISENGAGE THE SAFETY (P/N3300) AND SQUEZZE THE TRIGGER TO FIRE.
- OPEN SIGHTS (FRONT AND REAR) MAY BE REMOVED IN ORDER FOR A TELESCOPIC SIGHT TO BE FITTED TO THE RECEIVER GROOVES LOCATED.
- ALWAYS WIPE DOWN YOUR RIFLE WITH A CLOTH AND MINERAL OIL BEFORE STORING. DUE TO THE TEMPERATURE CHANGING WITHIN THE CHARGING TUBE ( P/N 0100) MOISTURE MAY APPEAR – THIS SHOULD BE MAINTAINED AND WIPED AWAY BEFORE STORAGE OTHERWISE IT MAY CAUSE RUET TO APPEAR.

## **PART 5: SPECIFICATIONS**

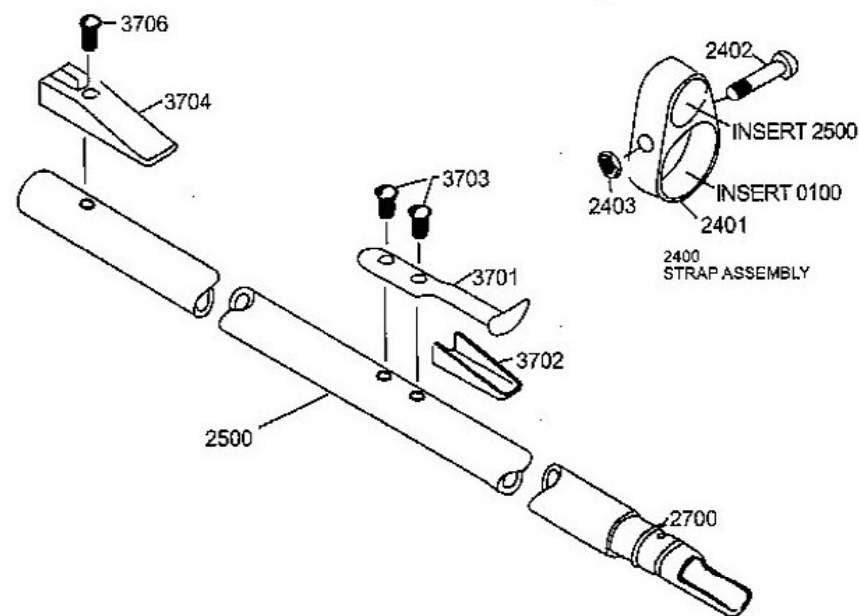
- TYPE: SINGLE SHOT BOLT ACTION RIFLE
- POWER SOURCE: TWO (2) CO2 CAPSULES (12 GRAM)
- AMMUNITION: LEAD AIRGUN PELLET (.177-4.5mm/.22-5.5mm)
- MAX C.T.C: 0.50 INCH (13mm) @ 32.8 ft (10m)
- VELOCITY: 510 f.p.s WHEN FIRING .22 (5.5mm) AT 60°F - 80°F
- TRIGGER: SINGLE STAGE/THREE WAY ADJUSTABLE
- SAFETY: TRIGGER BLOCK SAFETY, LEVER ACTUATED
- SIGHTS: OPEN FIXED FRONT & ADJUSTABLE REAR
- BARREL: STEEL BUTT RIFLES (12 GROOVES)
- HARDWOOD STOCK: STANDARD VERSION
- SCOPE GROOVES: 11.5mm CUT INTO BREECH BLOCK
- LENGTH: 40 inch (1015 mm)
- WEIGHT: 5.75lbs (2.6 kg)

## PART 6: EXPLODED VIEW AND PARTS LIST

1800	Trigger Casing Ass'y
1801	Trigger Casing
1802	Pivot Pin (3)
1803	Sear Nub Pin(2)
1804	Trigger
1805	Sear
1806	Sear Spring
1807	Top Screw
1808	Middle Screw
1809	Tigger Spring
1810	Bottom Screw
1811	Safety Spring
1812	Safety Rod
1813	Casing Plate
1814	Casing Plate Screw (2)
2400	Strap Ass'y
2401	Strap
2402	Strap Screw
2403	Strap Screw Nut
3700	Sight Package
3701	Rear Sight
3702	Rear Sight Ramp
3703	Rear Sight Screw (2)
3704	Front Sight
3705	Front Sight Screw

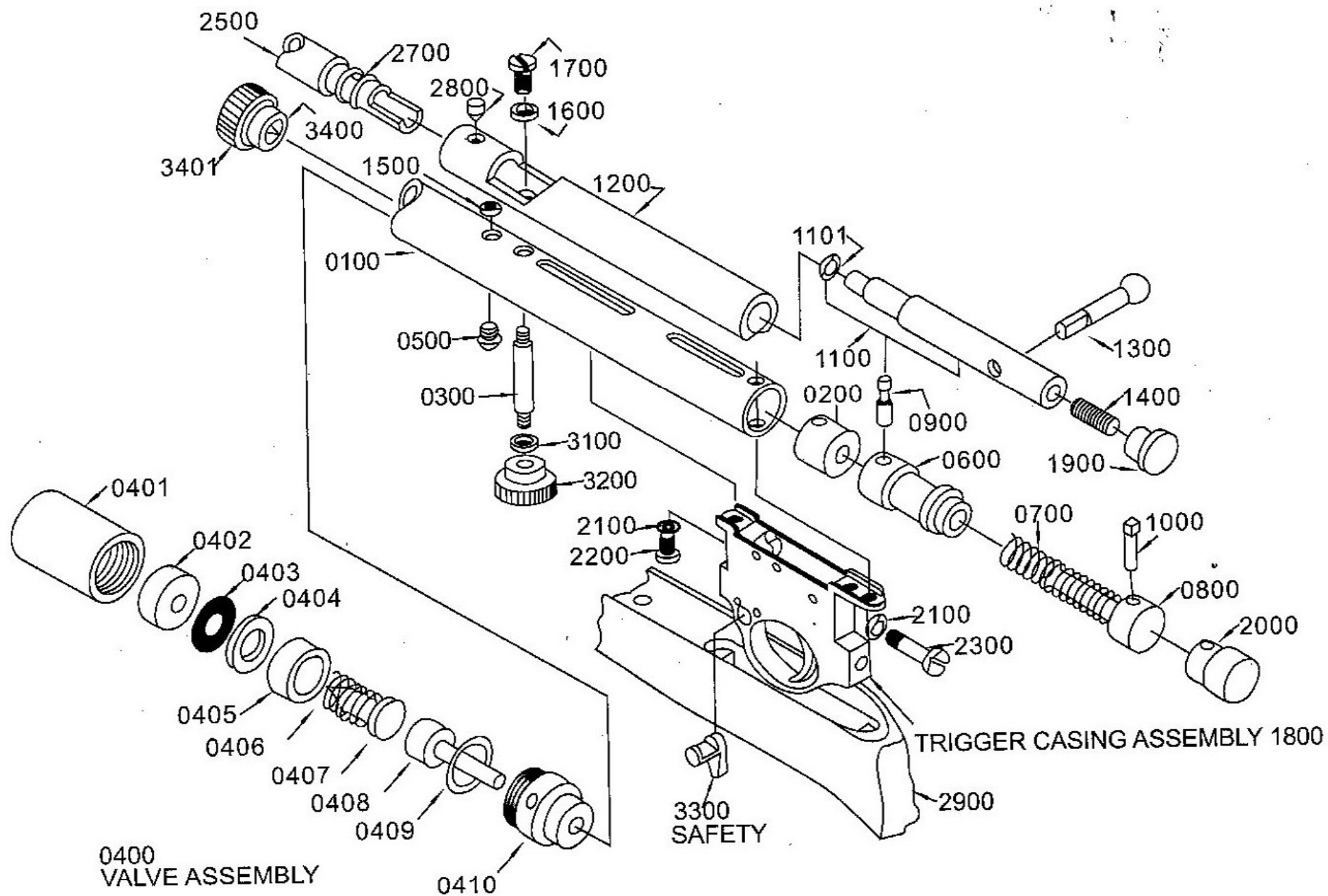


1800 TRIGGER CASING ASSEMBLY



## **EXPLODED VIEW/ PARTS LIST CONT:**

0100	Tube	1800	Trigger Casing Ass'y
0200	Inside Plug	1900	Breech Plug
0300	Locating Screw	2000	Tube Plug
0400	Valve Ass'y	2100	Casing Lock Washer (2)
0401	Piercing Body	2200	Front Casing Screw
0402	Filter	2300	Rear Casing Screw
0403	Screen	2400	Strap Ass'y
0404	Washer	2500	Barrel .22 Calibre
0405	Spacer	2700	Barrel O ring (2)
0406	Check Valve Spring	2800	Barrel Set Screw
0407	Piercing Pin	2900	Hardwood Stock
0408	Valve Stem Ass'y	3100	Plain Washer
0409	O Ring, 19 mm	3200	Locating Screw Nut
0410	Exhaust Valve Body	3300	Safety
0500	Valve Set Screw	3400	Tube Cap Ass'y
0600	Hammer	3401	O Ring, 19 mm
0700	Hammer Spring	3500	Butt Plate
0800	Cocking Block	3600	Butt Plate Screw (2)
0900	Hammer Pin	3700	Sight Package
1000	Cocking Pin	3900	Buck Fill Adaptor Ass'y
1100	Breech Bolt Assembly.22 Calibre		
1101	O Ring		
1200	Breech		
1300	Bolt Knob		
1400	Breech Bolt Set Screw		
1500	Breech Gasket		
1600	Lock Washer		
1700	Hold Down Screw		



**IMPORTANT: DO NOT ATTEMPT TO DIS-ASSEMBLE**

THE MECHANISM OF THIS GUN IS COMPLICATED AND INCLUDES SAFETY MECHANISMS AND COMPRESSED GAS AND CO2 PRESSURED CHAMBERS - SERIOUS INJURY OR DEATH MAY OCCUR IF **DISASSEMBLY** IS ATTEMPTED BY AN UNSKILLED & INEXPERIENCED PERSON

**REPAIR/SERVICE:**

- IF YOUR AIR RIFLE REQUIRES REPAIR OR SERVICE PLEASE CALL CUSTOMER SERVICES ON 01206 795333 (SMK) FOR FURTHER INFORMATION

**WARRANTY:**

- **COVERED:** MANUFACTURING / MATERIAL FAULTS AND LABOUR ON GENUINE FAILURE – RETURN CARRIAGE COST EXCEPTED
- **NOT COVERED:** FAULTS OR PROBLEMS RESULTING FROM USE OF INCORRECT AMMO, USE OF INCORRECT CO2 CYLINDERS. COMMERCIAL USE INVALIDATES THE WARRANTY/FAIR WEAR AND TEAR/DAMAGE TO PROPERTY/INJURY TO THIRD PARTIES EXCEPTED.
- UNAUTHORISED DISASSEMBLY

**SPORTSMARKETING**  
**COMMERCE WAY, WHITEHALL ROAD INDUSTRIAL ESTATE,**  
**COLCHESTER, ESSEX, CO2 8HH. TEL: 01206 795333 FAX: 01206 792679**  
**WWW.SPORTSMK.CO.UK**